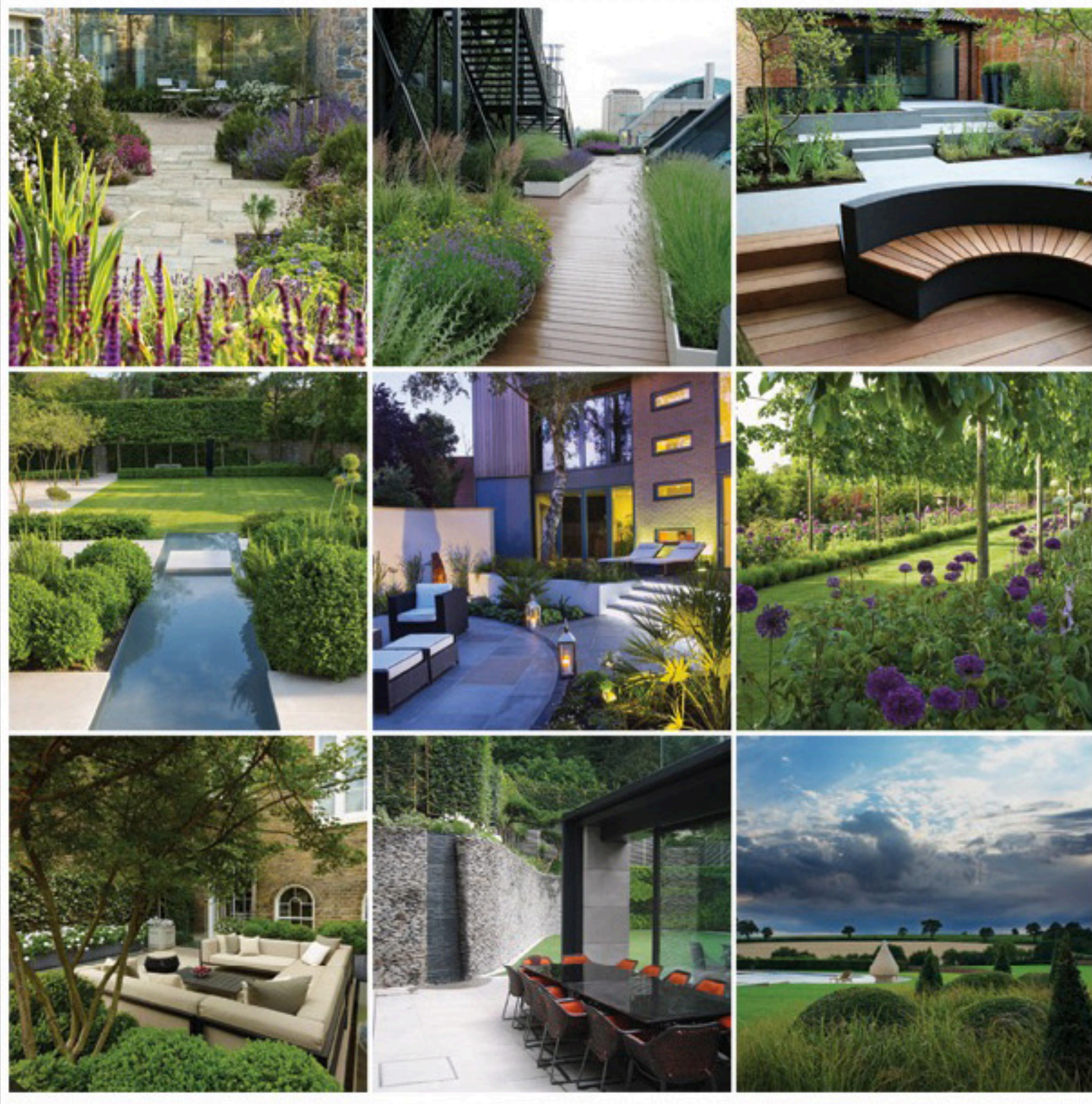


## SGD AWARDS - SHORTLIST ANNOUNCED



Another year of inspiring entries in the SGD Awards has resulted in the judging panel creating a shortlist of 30 in the main award categories. Projects range from inventive pocket-sized plots to a 21st century garden restoration inspired by and honouring Gertrude Jekyll's historic schemes.

Finalists in the three *Residential Garden* categories and in the *International, Public and Communal* and the new *Pocket Garden* award categories will now be entered into the *People's Choice Award* run by Awards media partner, Homes & Gardens magazine. The same finalists will also be competing for the highly coveted *Grand Award*, which will be decided by the main judging panel.

Visit the SGD Awards website to see images of all the projects shortlisted in the main award categories. [www.sgdawards.com](http://www.sgdawards.com)

### SHORTLISTED GARDEN PROJECTS

- Bermondsey garden** - Charlotte Rowe MSGD
- Chateau du Sable** - James Basson MSGD
- College Crescent** - John Davies
- Cremorne Gardens** - Marcus Foster
- Contemporary Curved Courtyard** - Sue Townsend MSGD
- Dovecote Barn** - Cassandra Crouch
- Eaton Square garden** - John Wyr FSGD
- Folly Farm** - Dan Pearson MSGD
- Harefield** - Suzanne Sleeper
- Hawkedon House** - Thomas Hoblyn MSGD
- Horatio's Garden** - Cleve West MSGD
- Le Haut, Guernsey** - Debbie Roberts MSGD
- Millwater, Surrey** - Ian Smith MSGD
- New paradise garden** - Sean Swallow
- Old House Farm** - Amanda Patton MSGD
- Price Waterhouse Coopers** - Matthew Bell MSGD
- Hampstead garden** - Andrew Wenham MSGD
- Regent's Park House** - Patricia Fox MSGD
- Snow Hill** - Gavin McWilliam
- Suffolk Manor garden** - Sue Townsend MSGD
- The Old Bakery** - Rebecca Smith
- The River Garden** - Rosemary Coldstream MSGD
- Wimbledon garden** - Charlotte Rowe MSGD

Finalists in the *Student* and *Designing for Community Space* Awards will be announced in the Autumn.

The winners of all 19 awards will be revealed at The SGD Awards ceremony on 30 January 2015. The event promises to be one of the highlights of the garden design calendar. Look out for tickets, which go on sale later in the year.

**IMAGES LEFT TO RIGHT FROM TOP ROW:** Debbie Roberts MSGD, Matthew Bell MSGD, Rosemary Coldstream MSGD, Charlotte Rowe MSGD (Photo: Marianne Majerus), Sue Townsend MSGD (Photo: Marianne Majerus), Ian Smith MSGD, John Wyr FSGD (Photo: Allan Pollok-Morris), Andrew Wenham MSGD, Thomas Hoblyn MSGD

Media partner

**HOMES & GARDENS**

Headline and Grand Award Sponsor

**EURO PLANTS**  
UK LIMITED

Award category sponsors



stockscape

**ALITEX™**  
GREENHOUSES AND CONSERVATORIES



**Barcham**  
The Tree Specialists

sculpture  
by the lakes

**DAVID HARBER**  
LANDSCAPE • SCULPTURE • WATER FEATURES



If you would prefer not to receive further emails from the Society of Garden Designers, please [unsubscribe here](#). (Please allow 7 days for your request to be processed).